

SPEC SHEET + MEASUREMENTS

Product photo

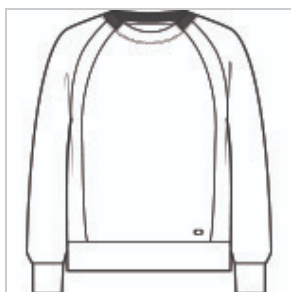


OGIO[®] Women's Transcend Pullover. LOG863

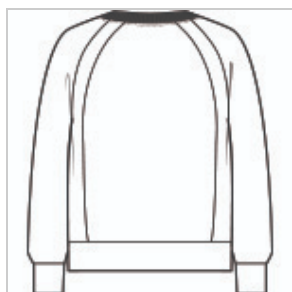
Transcend the line between work and leisure. With ultra soft double-knit and stretch, this sueded pullover is as cozy and comfortable as it is polished.

- 9.1-ounce, 50/44/6 rayon/recycled polyester/spandex double-knit fleece
- Half self-fabric, half rib knit collar
- Stretch back neck taping with OGIO locker loop
- OGIO heat transfer label for tag-free comfort
- Raglan sleeves
- Banded cuffs and hem
- Tonal embroidered O icon on left hem

Sketches



front



back

Care Instructions

Machine Wash Cold With Like Colors. Do Not Use Fabric Softener. Do Not Bleach. Tumble Dry Low, Remove Promptly. Cool Iron, If Necessary.

Product Measurements

	XS	S	M	L	XL	2XL	3XL	4XL
Size	2	4/6	8/10	12/14	16/18	20/22	24/26	28/30
Body Length at Back	24 1/2	25	25 1/2	26	26 1/2	27	27 1/2	28
Bust	20 1/2	21 1/2	22 1/2	24	25 1/2	27	29	31
Sleeve Length from Center Back	31	31 1/2	32	32 5/8	33 1/4	33 7/8	34 1/4	34 5/8

Body Length at Back: Measured from high point shoulder to finished hem at back.

Bust: Measured across the chest one inch below armhole when laid flat.

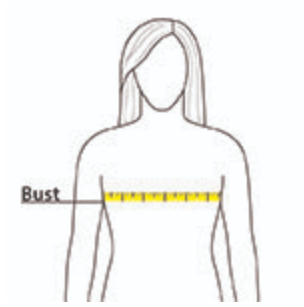
Sleeve Length from Center Back: Measure from Center Back neck to shoulder point to sleeve hem.

Size Chart

	XS	S	M	L	XL	2XL	3XL	4XL
Size	2	4/6	8/10	12/14	16/18	20/22	24/26	28/30
Bust	32-34	35-36	37-38	39-41	42-44	45-47	48-51	52-55

How To Measure

Bust



Measure under the arm and around the fullest part of the bust with arms down, keeping tape horizontal.

Colors

Please note: PMS code information is shown only when an exact match is available.



Ashen Plum



Blacktop
PMS BLACK
C



Opal White



Tarmac Grey
PMS 7540C